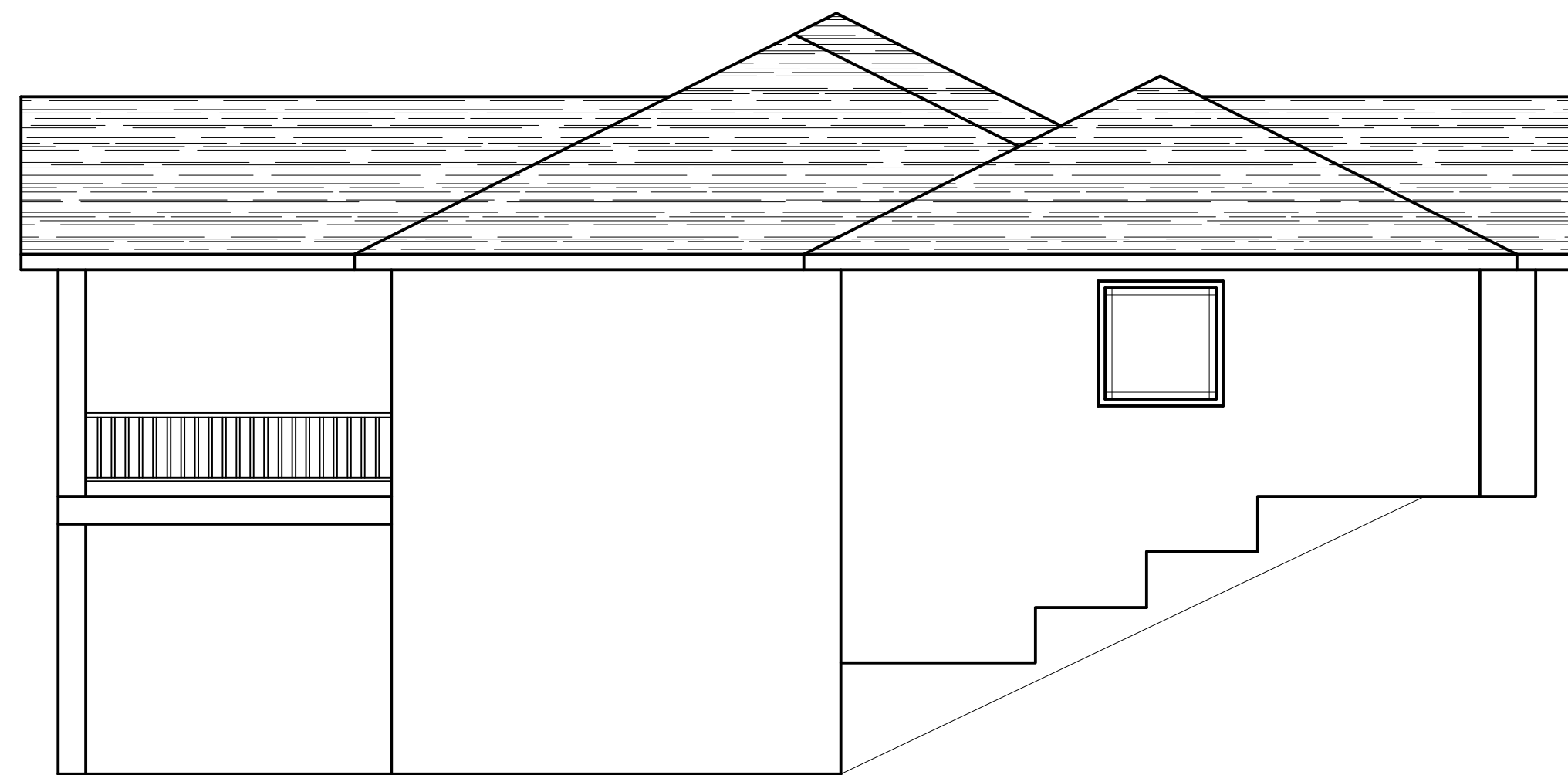
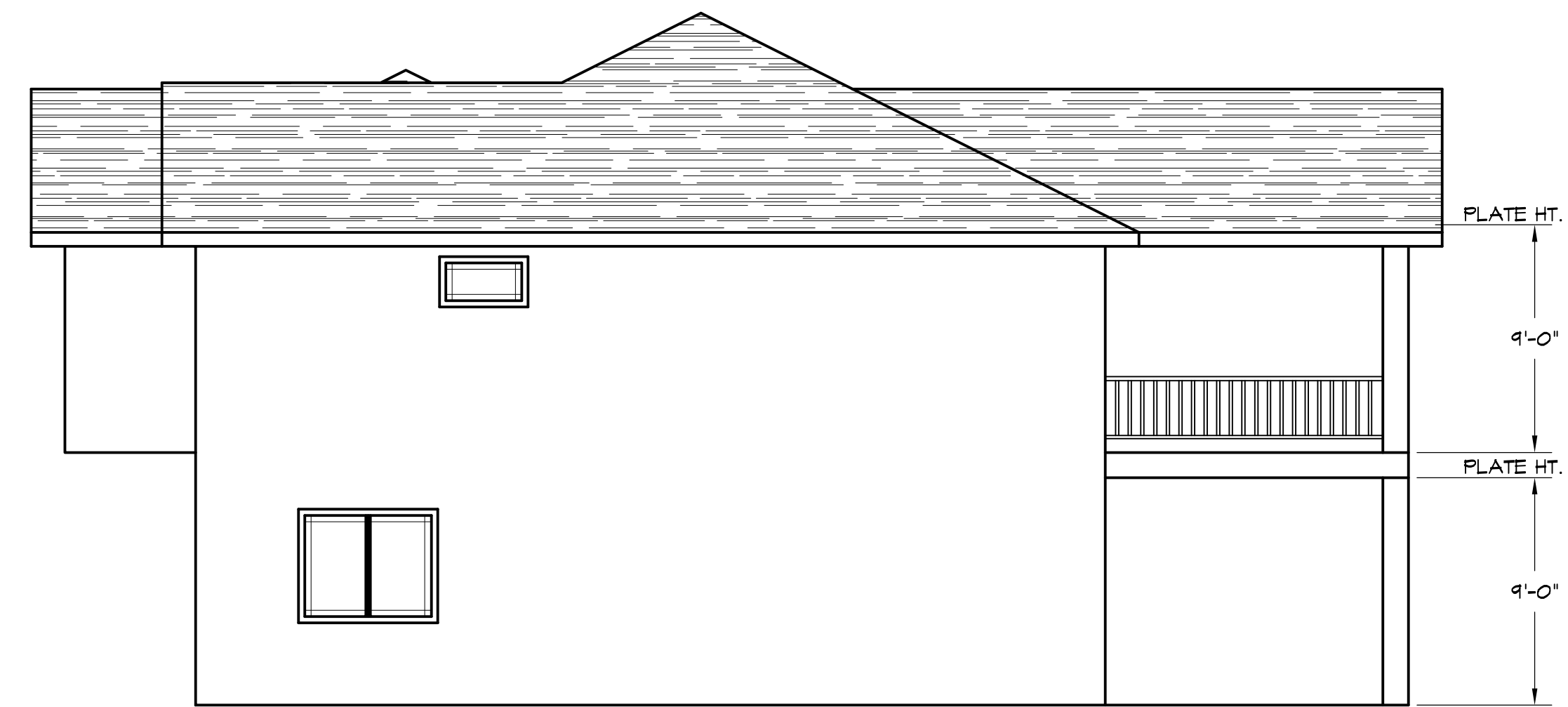


FRONT ELEVATION  
SCALE: 3/16"=1'-0"



LEFT ELEVATION  
SCALE: 3/16"=1'-0"

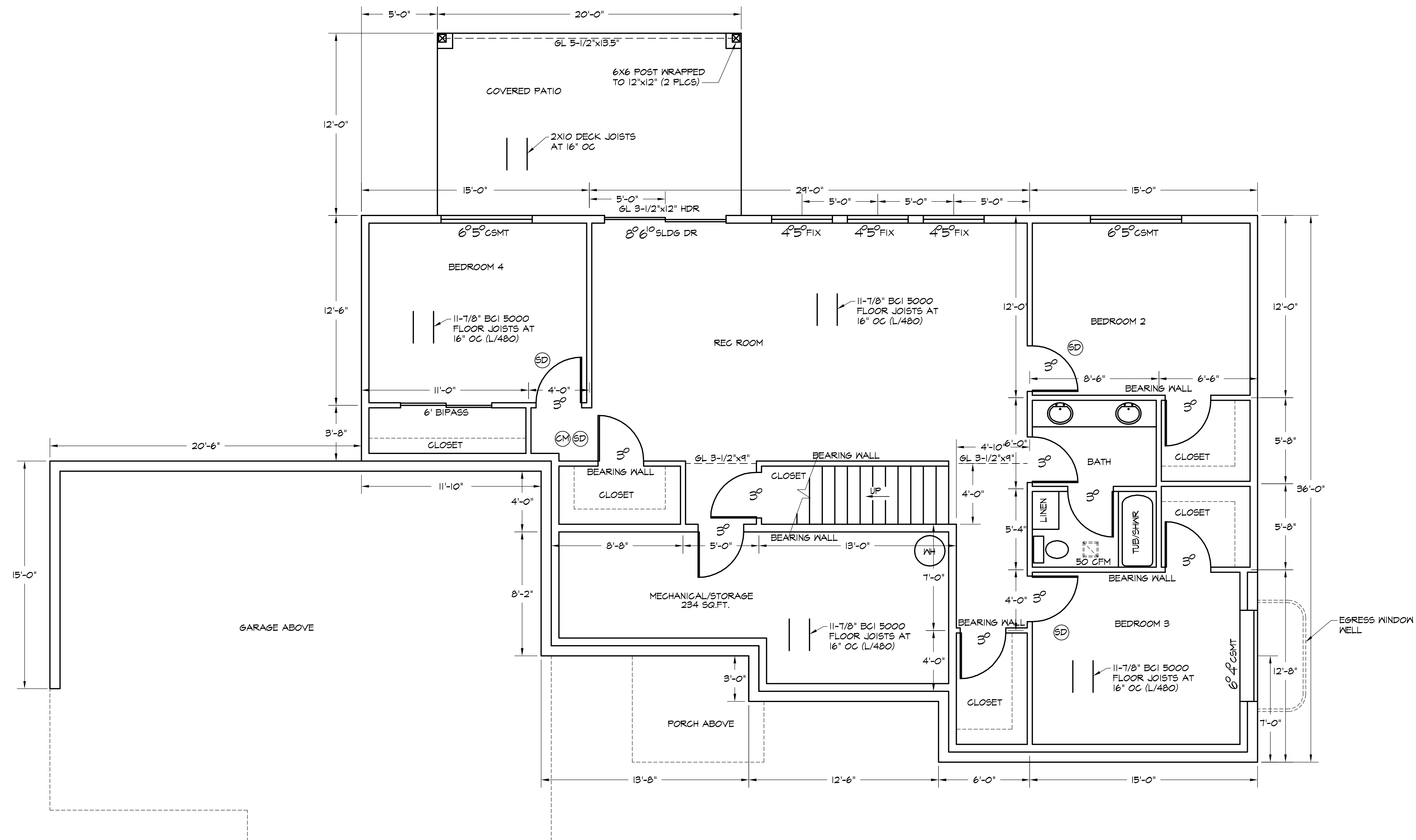


RIGHT ELEVATION  
SCALE: 3/16"=1'-0"



BACK ELEVATION  
SCALE: 3/16"=1'-0"

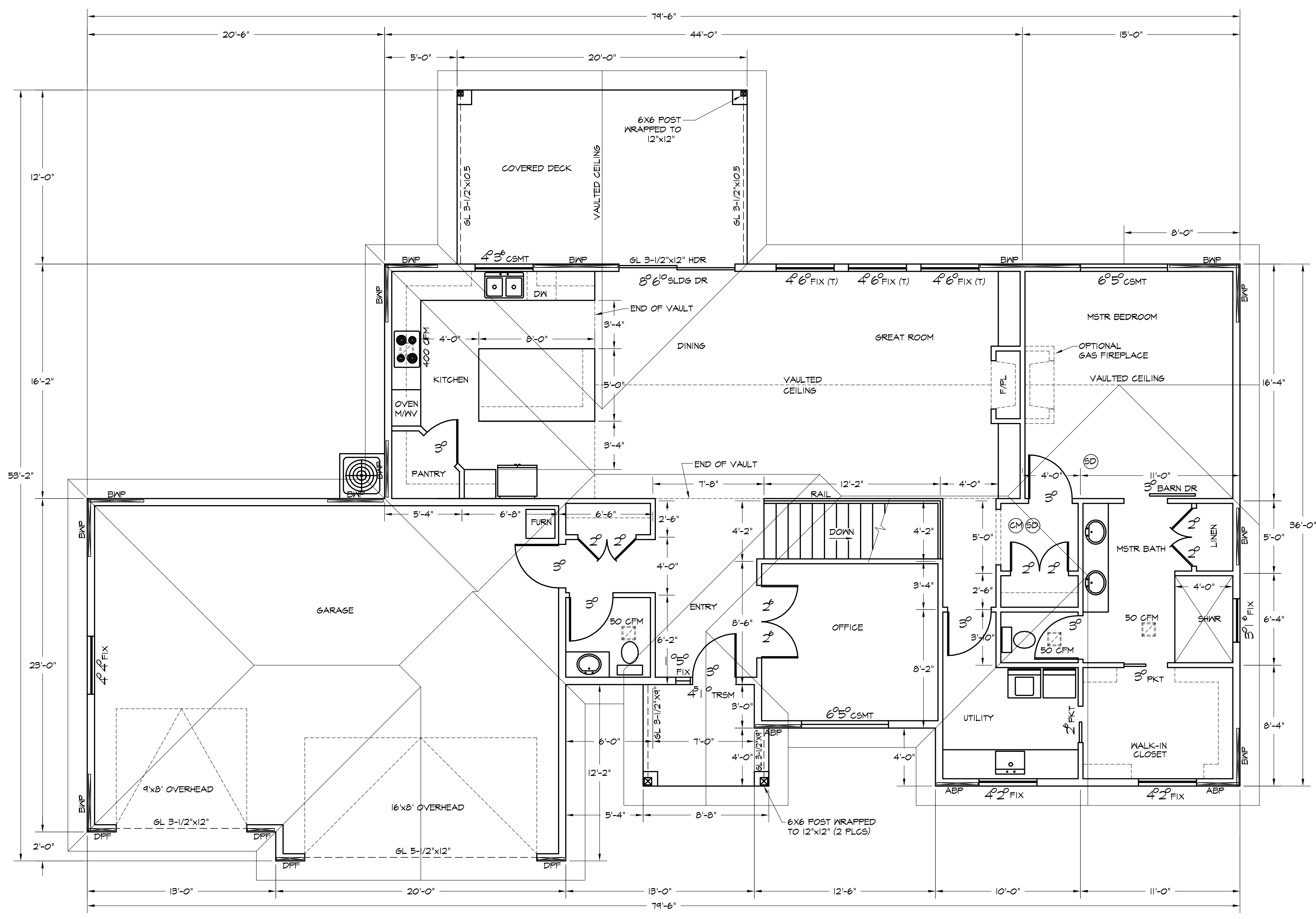
LOT 7 ELEVATIONS		
DRAWN BY: MARK JOHNSON DESIGNS INC.		
SCALE: SHOWN	DATE: 2/28/19	SHT. 1



**BASEMENT PLAN**

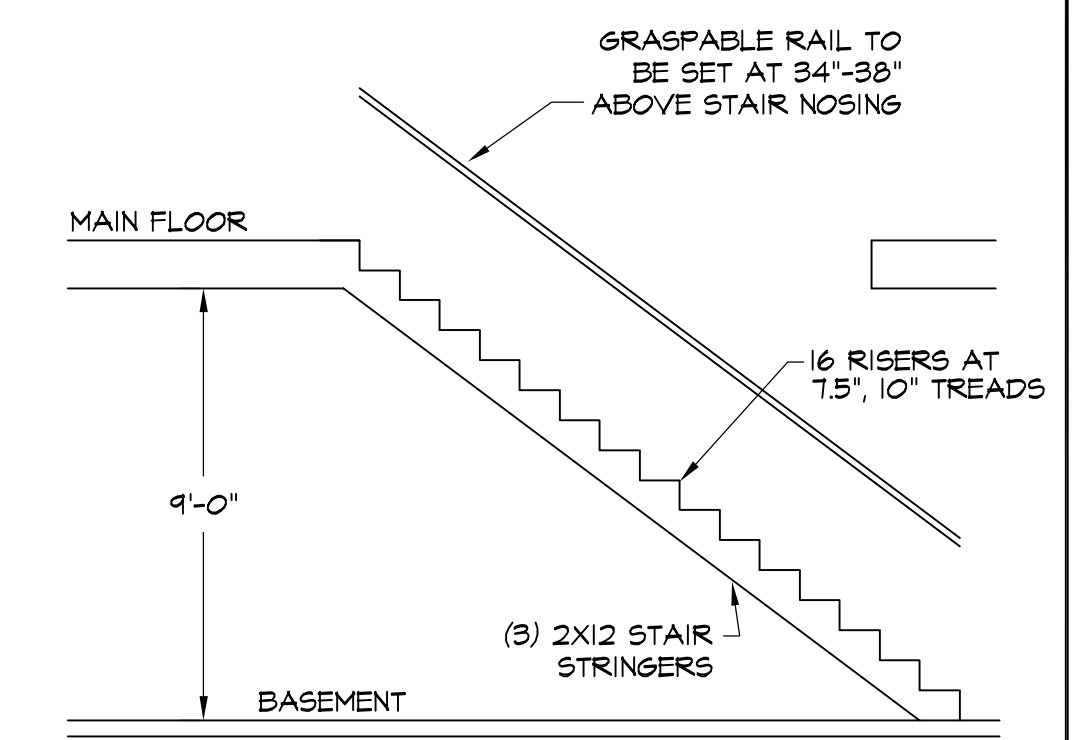
SCALE: 1/4"=1'-0"  
(9' CEILING, UNLESS NOTED OTHERWISE)

LOT 7 BASEMENT PLAN		
DRAWN BY: MARK JOHNSON DESIGNS INC.		
SCALE: 1/4"=1'-0"	DATE: 2/28/19	SHT. 3



**MAIN FLOOR PLAN**  
 SCALE: 1/4"=1'-0"  
 (9' CEILING, UNLESS NOTED OTHERWISE)

BRACED WALL PANEL SCHEDULE	
BWP	MINIMUM 4" PANEL: 7/16" OSB SHEATHING, BLOCK AND NAIL ALL EDGES 6" O.C. W/ 8d COMMON, 1-3/8" MINIMUM PENETRATION, NAIL FIELD 12" O.C. FOR 16" STUD SPACING
ABP	MINIMUM 2'-8" PANEL: 7/16" OSB SHEATHING, BLOCK AND NAIL ALL EDGES 4" O.C. W/ 8d COMMON, 1-3/8" MINIMUM PENETRATION, NAIL FIELD 12" O.C. SIMPSON 5THD14 OR HTT22 (OR EQUIVALENT) EACH END OF PANEL, W/ (2) 1/2"x10" ANCHOR BOLTS.
IBWP	MINIMUM 4'-0" PANEL: 1/2" GMB BOTH SIDES, 5d NAIL (OR SCREWS) AT 7" O.C. SOLE PLATE NAILED INTO SOLID BLOCKING (PERPENDICULAR TO SOLE PLATE) BETWEEN JOISTS, OR LINE UP JOIST UNDER SOLE PLATE



**STAIR SECTION**  
 SCALE: 1/4"=1'-0"

**LEGEND**

- ABP 32" ALT. BRACED PANEL (ABW)
- BWP 48" BRACED WALL PANEL (WSP)
- DPF DOUBLE PORTAL FRAME (CS-PF)
- SFF SINGLE PORTAL FRAME (CS-PF)
- IBWP INTERIOR BRACED WALL PANEL (GB)
- (T) TEMPERED SAFETY GLASS
- SD SMOKE DETECTOR
- CM CARBON MONOXIDE SENSOR
- EF EXHAUST FAN

**SQUARE FOOTAGE**

MAIN FLOOR	1,740 SQ. FT.
BASEMENT	1,684 SQ. FT.
<b>TOTAL LIVING</b>	<b>3,424 SQ. FT.</b>
GARAGE	781 SQ. FT.

LOT 7 MAIN FLOOR PLAN			
DRAWN BY: MARK JOHNSON DESIGNS INC.			
SCALE:	DATE:	SHT.	
1/4"=1'-0"	2/28/19	2	